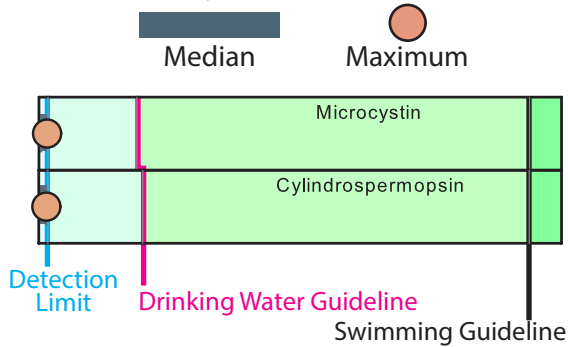


# Sugar Creek Site 1

2021 Data Table	4/21	5/21	6/12	7/1	7/20	8/10	9/1	10/2	Mean*
Temp (F)	52	69	86	80	81	83	75	74	74
Secchi (feet)	2.3	2.3	2.3	3.3	2.6	2.3	3.0	3.0	2.6
Phosphorus (µg/L)	82	100	53	47	48	50	42	45	56
Nitrogen (µg/L)	920	1273	610	600	850	830	770	745	803
Ammonium (µg/L)				<10	17	35	17	17	15
Nitrate (µg/L)				<5	<5	<5	<5	<5	<5
Chlorophyll (µg/L)	27.9	14.1	13.2	17.8	28.0	31.4	27.5	33.6	22.9
Sediment (mg/L)	7.5	8.5	5.9	3.1	3.2	4.0	2.3	2.1	4.0
Microcystin (µg/L)				<0.10	<0.10	<0.10	0.13	<0.10	<0.10
Cylindro (µg/L)				<0.04	<0.04	<0.04	<0.04	<0.04	<0.04

## 2021 Cyanotoxin Results



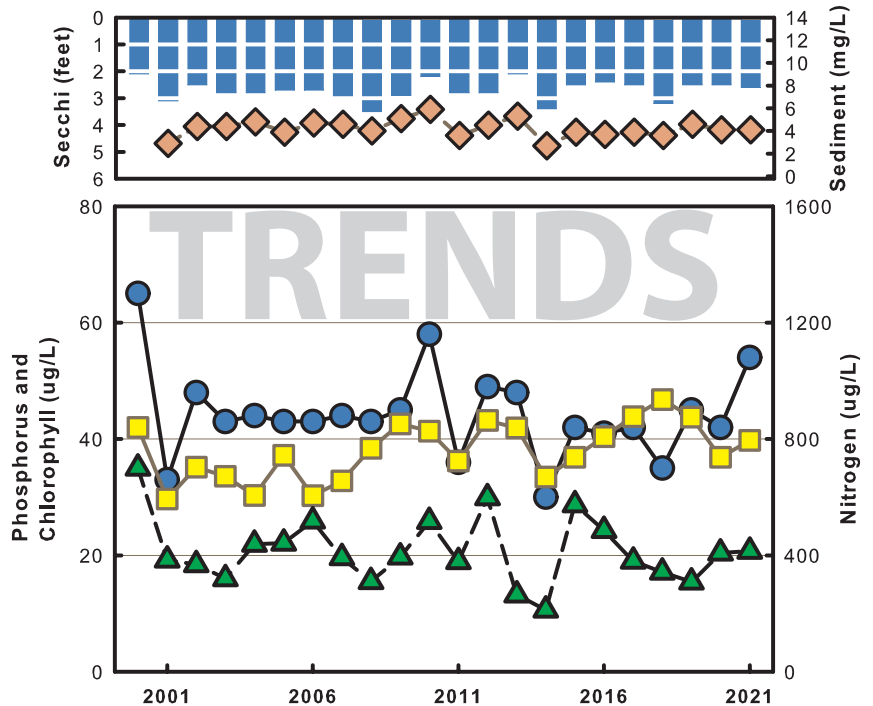
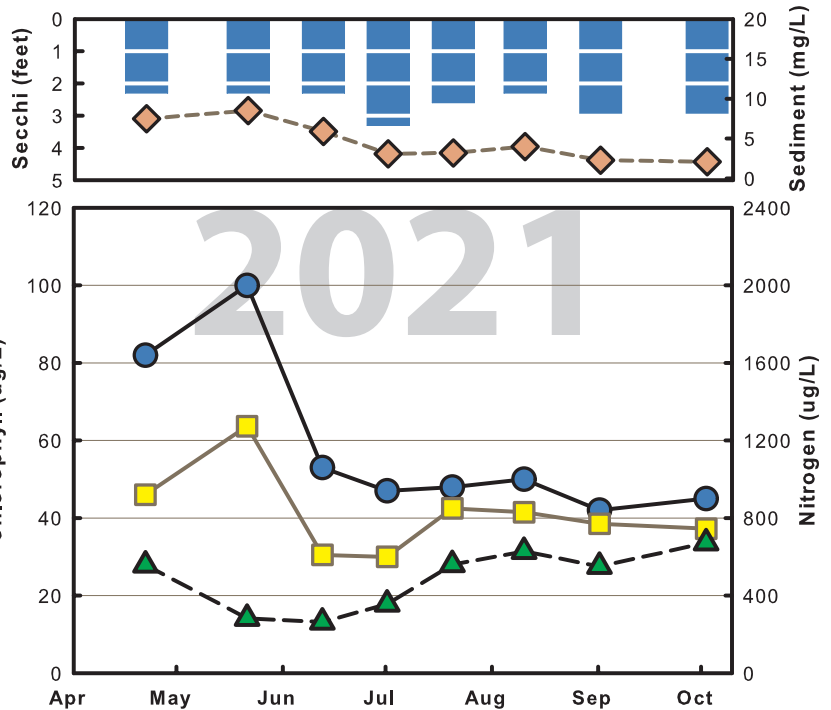
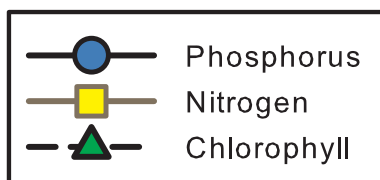
(\* Table shows geometric means)

Above: Cyanotoxin results

Right top: 2021 data graph

Right bottom: Long-term trend graph.  
(geometric mean data from May 15 -  
Sept. 15 only)

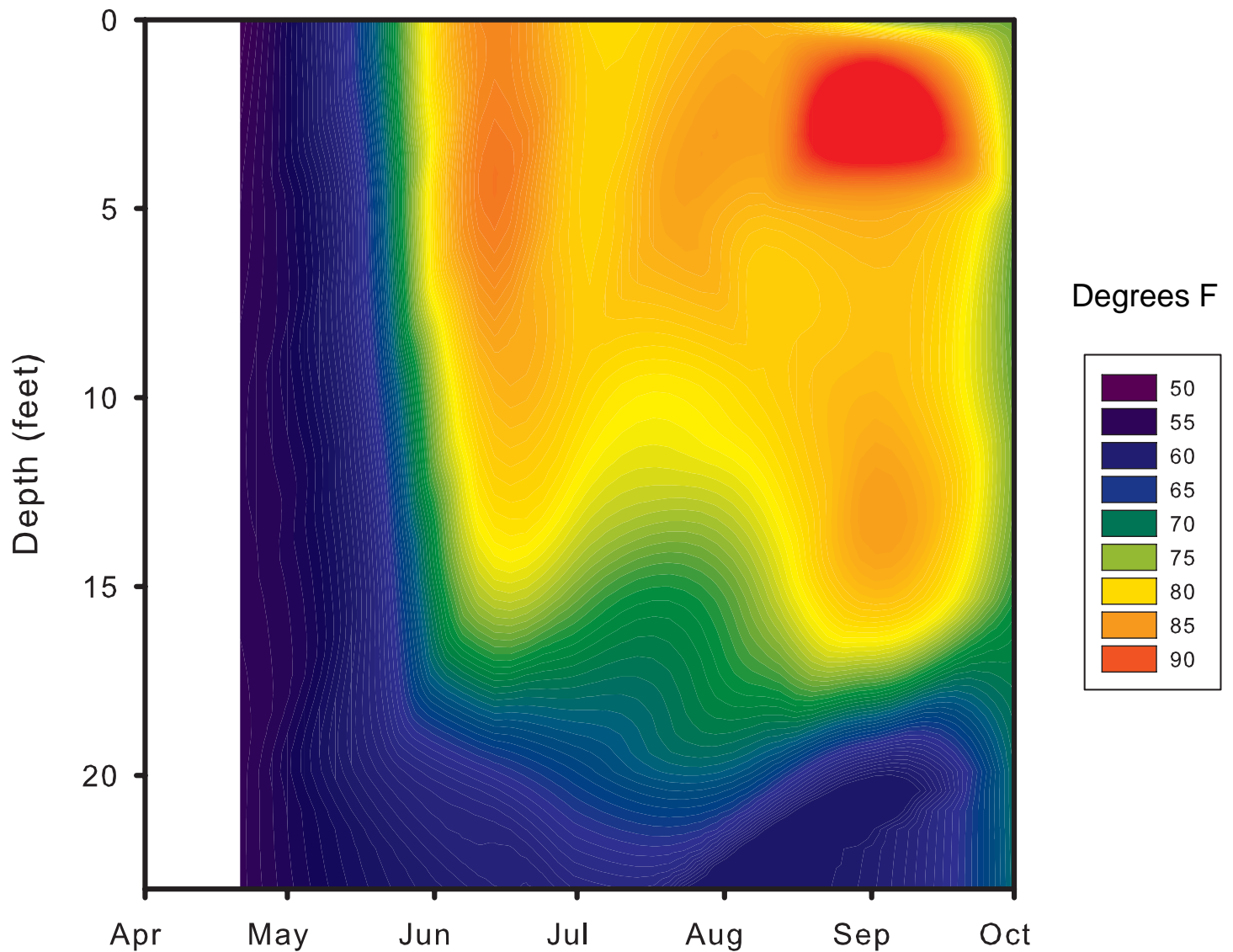
## Legend for 2021 and Trend graphs



# Sugar Creek Site 1 2021 Temperature/Depth Profile

To see the surface temperature through the 2021 season, follow the top of the graph from left to right and notice the color changes. You can follow the same procedure for any depth.

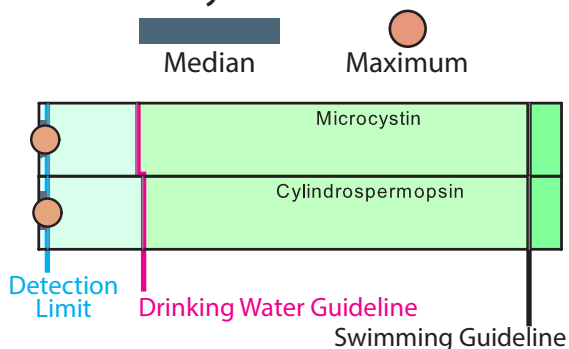
Another way to view the graph is pick a date on the bottom axis and look vertically to see where the temperature changes occur.



# Sugar Creek Site 4

2021 Data Table	4/21	5/21	6/12	7/1	7/20	8/10	9/1	10/2	Mean*
Temp (F)	58	74	88	82	82	85	82	75	78
Secchi (feet)	1.6	1.3	1.0	1.3	2.0	1.6	1.3	1.0	1.4
Phosphorus (µg/L)	90	153	114	109	57	97	112	119	103
Nitrogen (µg/L)	965	1095	795	1060	800	1070	1030	1560	1026
Ammonium (µg/L)	30	23	53	28	<10	12	34	36	23
Nitrate (µg/L)	276	117	7	6	<5	<5	<5	<5	10
Chlorophyll (µg/L)	30.7	44.9	32.7	41.0	27.6	38.6	40.2	42.9	36.8
Sediment (mg/L)	14.4	13.4	28.6	14.2	14.0	15.6	26.8	21.6	17.8
Microcystin (µg/L)	<0.10	<0.10	<0.10	<0.10	<0.10	<0.10	<0.10	0.11	<0.10
Cylindro (µg/L)	<0.04	<0.04	<0.04	<0.04	<0.04	<0.04	<0.04	<0.04	<0.04

## 2021 Cyanotoxin Results

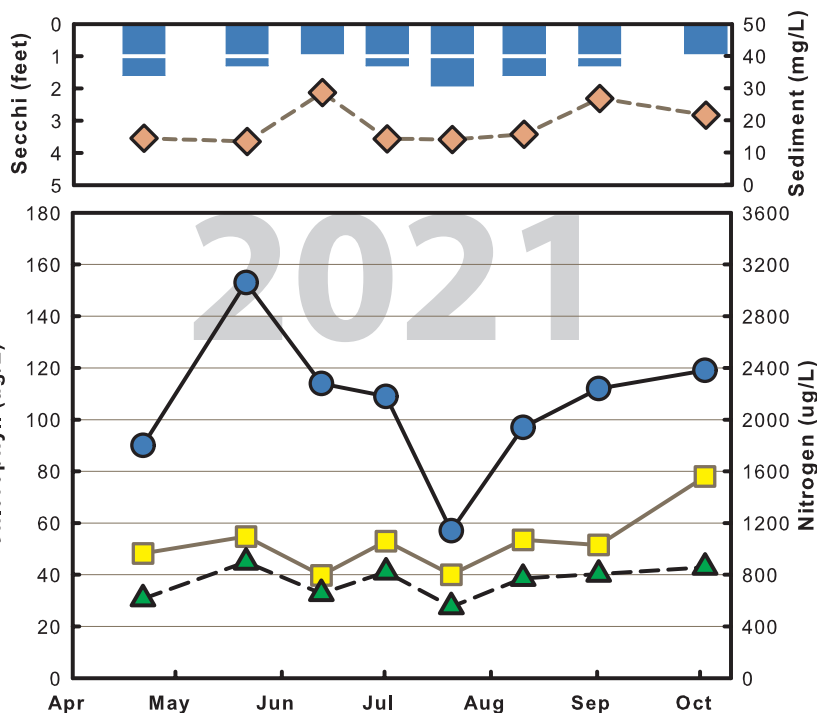


(\* Table shows geometric means)

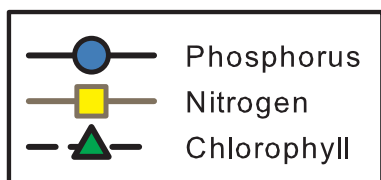
Above: Cyanotoxin results

Right top: 2021 data graph

Right bottom: Long-term trend graph.  
(geometric mean data from May 15 - Sept. 15 only)



## Legend for 2021 and Trend graphs



# TRENDS

# Sugar Creek Site 4

## 2021 Temperature/Depth Profile

To see the surface temperature through the 2021 season, follow the top of the graph from left to right and notice the color changes. You can follow the same procedure for any depth.

Another way to view the graph is pick a date on the bottom axis and look vertically to see where the temperature changes occur.

