

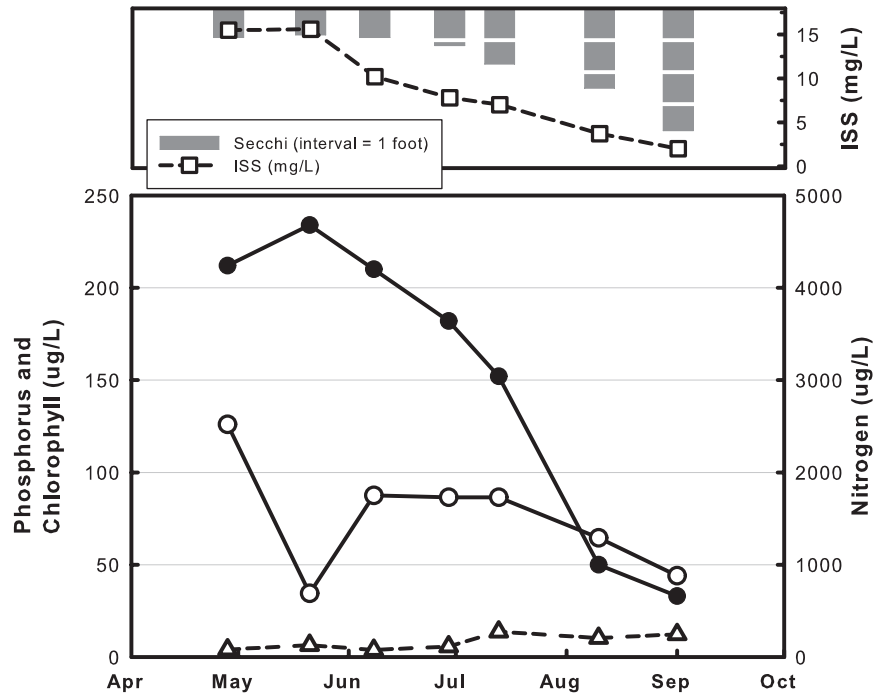
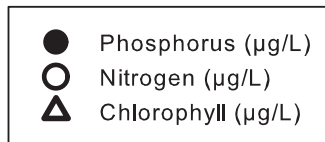
Mark Twain Lake, Site 1

2013 DATA TABLE

| | 4/28 | 5/21 | 6/8 | 6/29 | 7/13 | 8/10 | 9/1 | Mean |
|--------|------|------|------|------|------|------|------|------|
| Temp | 50 | 66 | 67 | 75 | 81 | 68 | 82 | 69 |
| Secchi | 11 | 10 | 11 | 14 | 21 | 30 | 46 | 17 |
| TP | 212 | 234 | 210 | 182 | 152 | 50 | 33 | 125 |
| TN | 2520 | 690 | 1750 | 1730 | 1730 | 1290 | 880 | 1396 |
| CHL | 4.0 | 6.4 | 3.8 | 5.6 | 13.7 | 10.2 | 12.3 | 7.1 |
| ISS | 15.5 | 15.6 | 10.2 | 7.8 | 7.0 | 3.7 | 2.0 | 7.2 |

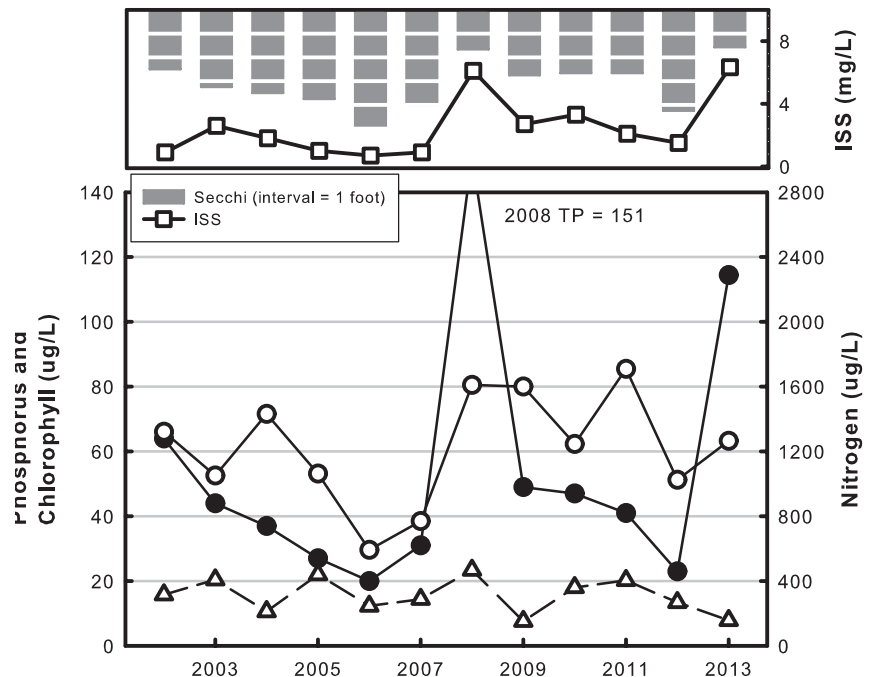
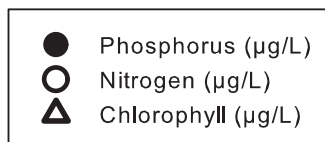
2013 GRAPH

Graph displays all 2013 data



TREND GRAPH

Graph displays geometric mean values for data collected between May 15 and September 15.



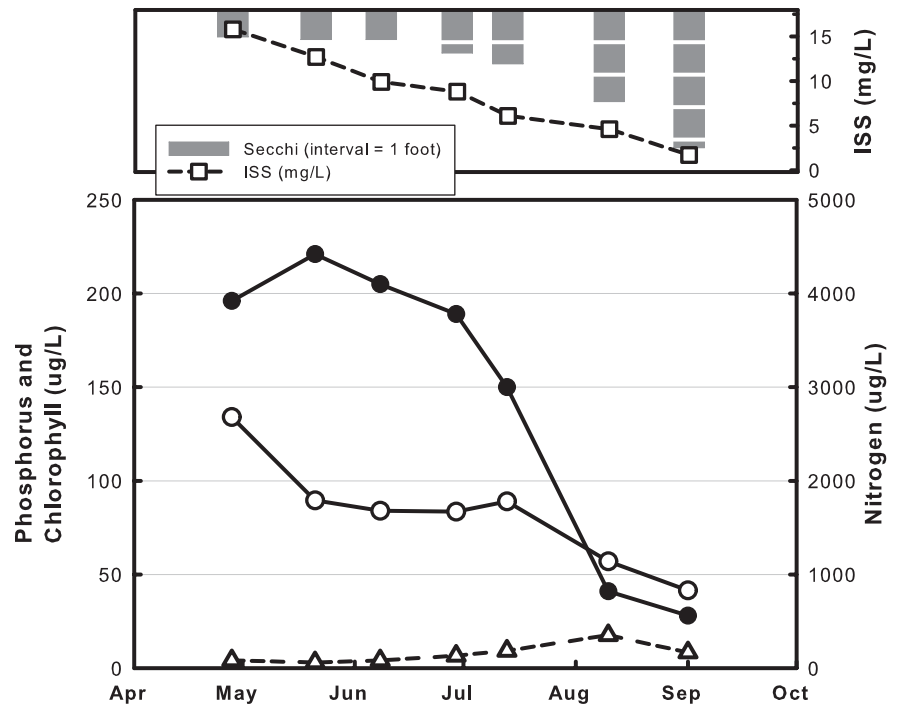
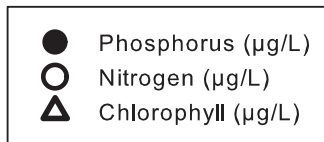
Mark Twain Lake, Site 2

2013 DATA TABLE

| | 4/28 | 5/21 | 6/8 | 6/29 | 7/13 | 8/10 | 9/1 | Mean |
|--------|------|------|------|------|------|------|-----|------|
| Temp | 51 | 67 | 69 | 74 | 82 | 71 | 82 | 70 |
| Secchi | 10 | 11 | 11 | 16 | 20 | 34 | 51 | 18 |
| TP | 196 | 221 | 205 | 189 | 150 | 41 | 28 | 116 |
| TN | 2680 | 1790 | 1680 | 1670 | 1780 | 1140 | 830 | 1562 |
| CHL | 4.1 | 3.0 | 4.1 | 6.6 | 9.2 | 17.6 | 8.3 | 6.4 |
| ISS | 15.8 | 12.7 | 9.9 | 8.8 | 6.1 | 4.6 | 1.7 | 7.0 |

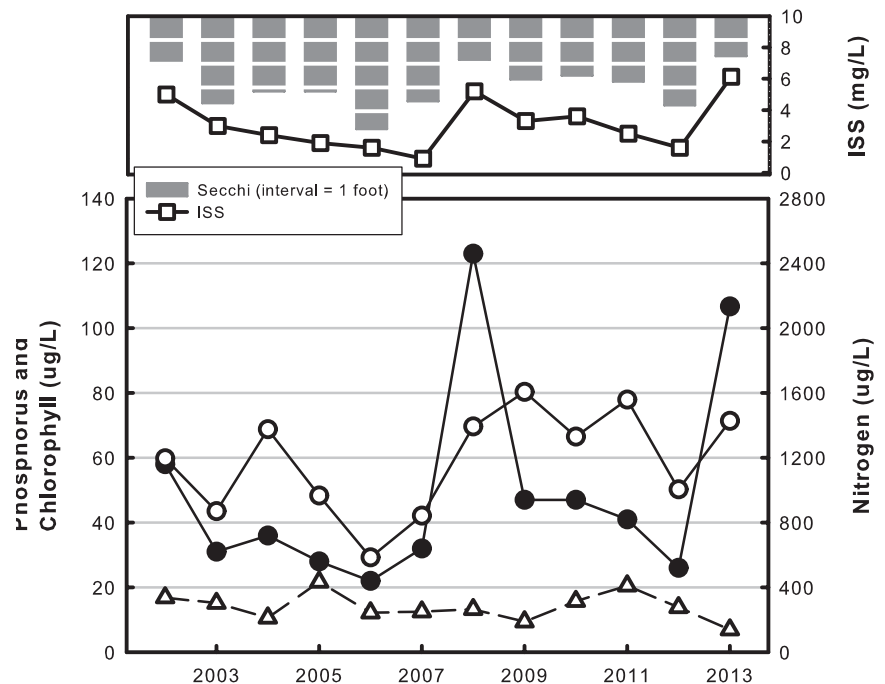
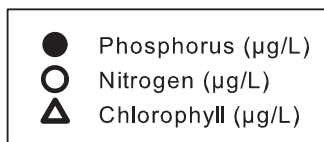
2013 GRAPH

Graph displays all 2013 data



TREND GRAPH

Graph displays geometric mean values for data collected between May 15 and September 15.



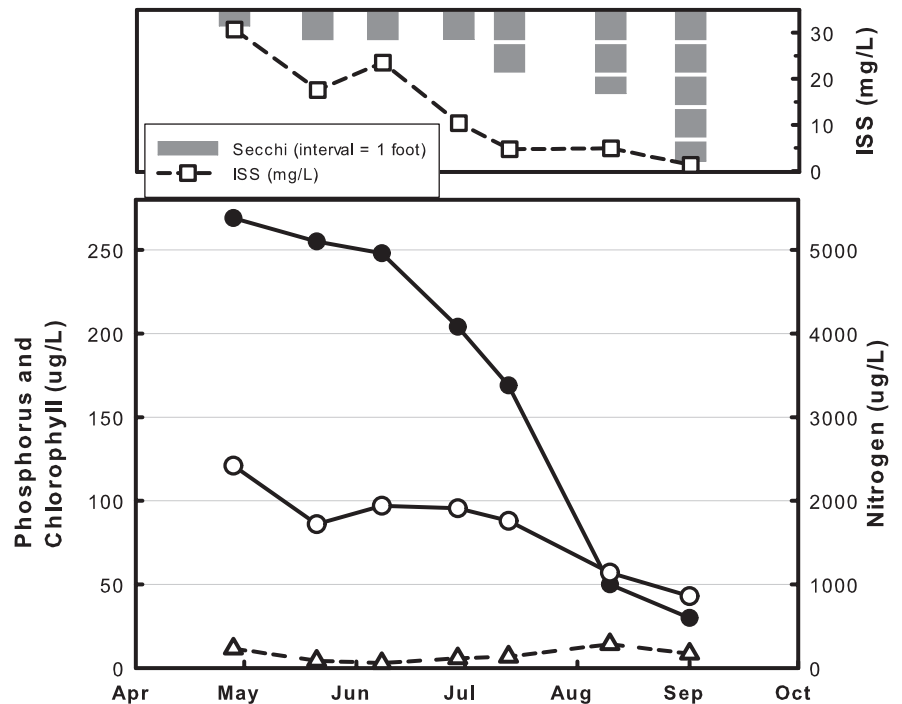
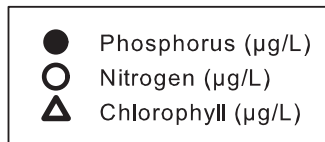
Mark Twain Lake, Site 5

2013 DATA TABLE

| | 4/28 | 5/21 | 6/8 | 6/29 | 7/13 | 8/10 | 9/1 | Mean |
|--------|------|------|------|------|------|------|-----|------|
| Temp | 51 | 64 | 70 | 74 | 82 | 70 | 82 | 70 |
| Secchi | 6 | 12 | 12 | 11 | 24 | 31 | 56 | 17 |
| TP | 269 | 255 | 248 | 204 | 169 | 50 | 30 | 136 |
| TN | 2420 | 1720 | 1940 | 1910 | 1760 | 1140 | 860 | 1598 |
| CHL | 11.6 | 4.3 | 2.9 | 5.8 | 6.8 | 14.2 | 8.6 | 6.8 |
| ISS | 30.7 | 17.6 | 23.5 | 10.4 | 4.7 | 4.9 | 1.3 | 8.8 |

2013 GRAPH

Graph displays all 2013 data



TREND GRAPH

Graph displays geometric mean values for data collected between May 15 and September 15.

