

# Sugar Creek Site 1

2020 Data Table	4/24	5/14	6/8	6/24	7/19	8/6	8/30	9/20	Mean*
Temp (F)	61	68	87	81	83	80	84	73	77
Secchi (feet)	1.9	1.9	2.5	3.4	2.3	2.5	2.2	2.5	2.4
Phosphorus (µg/L)	77	63	56	42	42	33	43	46	49
Nitrogen (µg/L)	923	1160	1005	830	595	555	760	655	787
Ammonium (µg/L)		82							82
Nitrate (µg/L)		483							483
Chlorophyll (µg/L)	17.0	5.0	20.0	17.0	21.0	18.0	29.0	29.0	17.6
Sediment (mg/L)	9.4	8.0	5.9	3.2	3.7	4.6	3.8	2.6	4.7
Microcystin (µg/L)									
Cylindro (µg/L)									

No 2020 Toxin Data

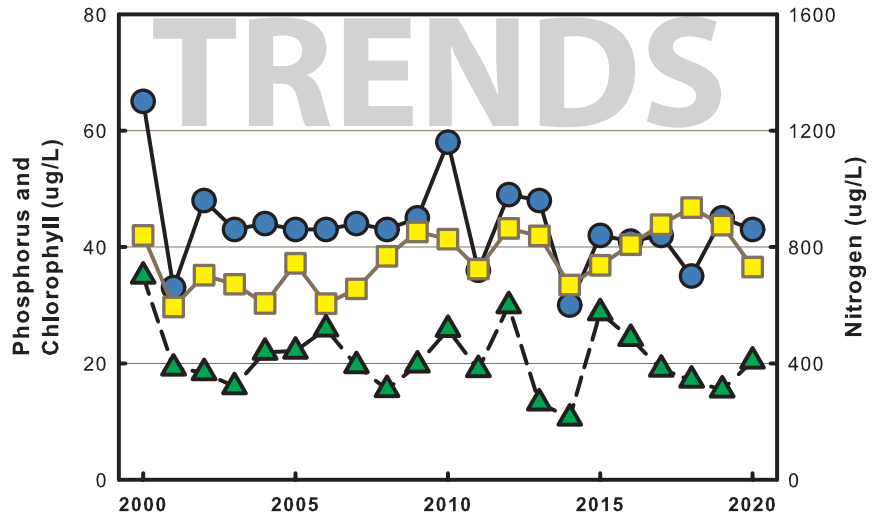
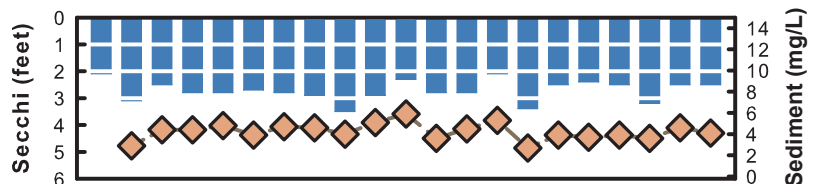
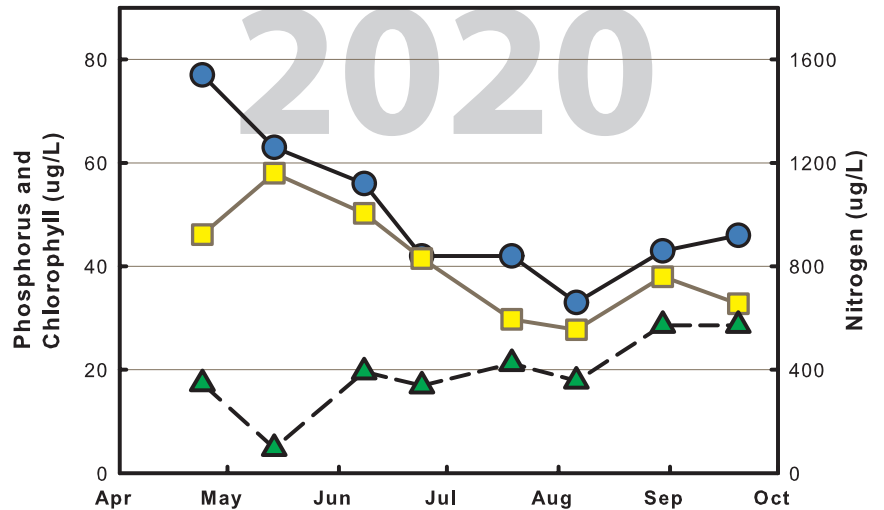
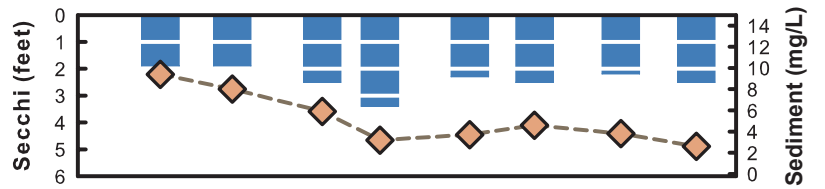
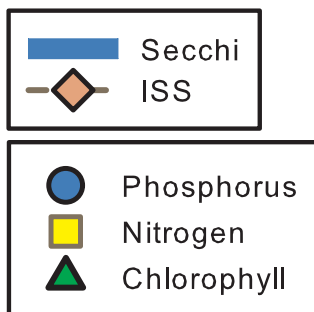
(\* Table shows geometric means)

Above: Algal toxin results

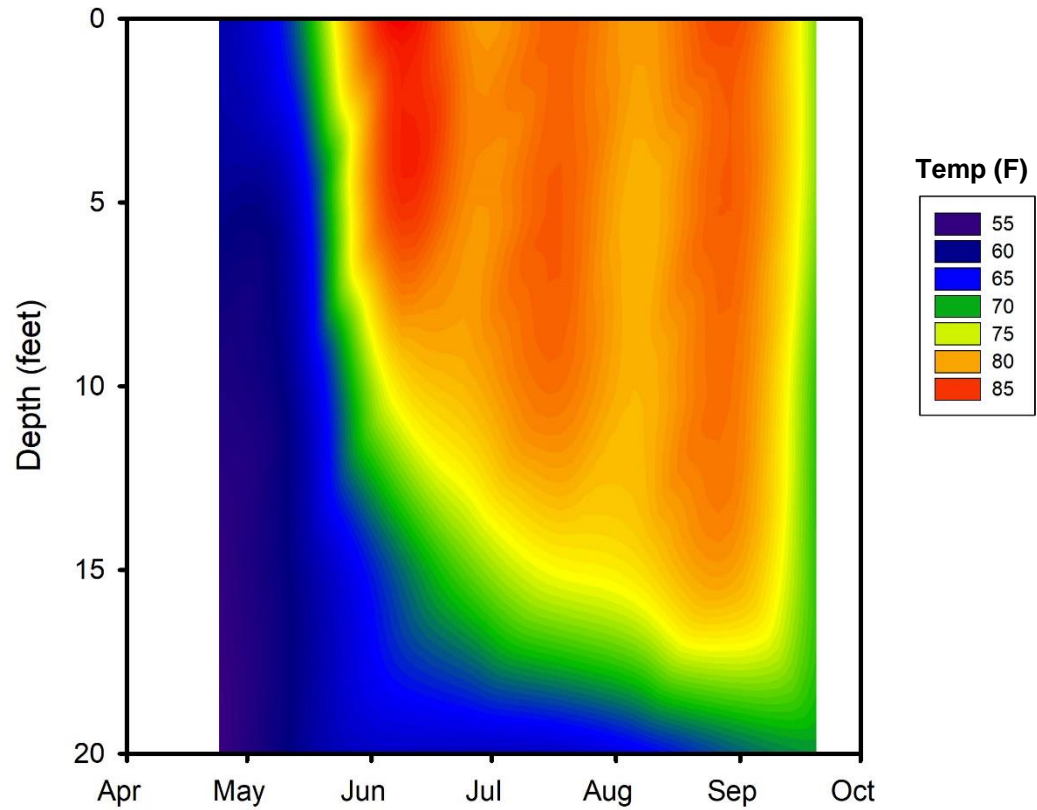
Right top: 2020 data graph

Right bottom: Long-term trend graph.  
(geometric meandata from May 15 -  
Sept. 15 only)

## Legend for 2020 and Trend graphs



## Sugar Creek 1



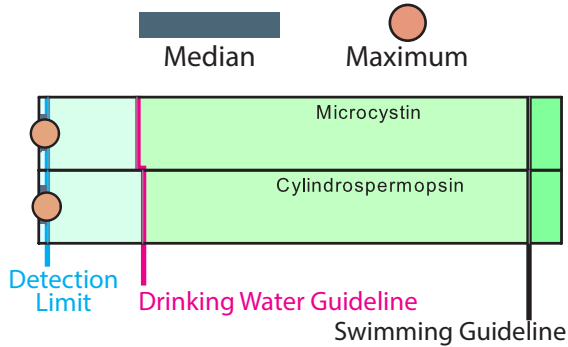
To see the surface temperature through the 2020 season, follow the top of the graph from left to right and notice the color changes. You can follow the same procedure for any depth.

Another way to view the graph is pick a date on the bottom axis and look vertically to see where the temperature changes occur.

# Sugar Creek Site 2

2020 Data Table	4/24	5/14	6/8	6/24	7/19	8/6	8/30	9/20	Mean*
Temp (F)	60	68	83	79	85	80	81	72	76
Secchi (feet)	1.8	1.5	2.1	3.0	2.5	2.8	1.7	2.3	2.2
Phosphorus (µg/L)	62	74	56	48	43	42	53	54	53
Nitrogen (µg/L)	810	1060	1175	815	695	650	705	690	807
Ammonium (µg/L)			15	<10	<10	40	<10	<10	<10
Nitrate (µg/L)			407	183	<5	<5	<5	<5	13
Chlorophyll (µg/L)	22.0	6.0	13.0	23.0	23.0	20.0	28.0	33.0	19.0
Sediment (mg/L)	9.2	11.5	6.6	4.2	3.4	5.2	5.7	5.2	5.9
Microcystin (µg/L)	<0.10	<0.10	<0.10	<0.10	<0.10	<0.10	<0.10	<0.10	<0.10
Cylindro (µg/L)	<0.04	<0.04	<0.04	<0.04	<0.04	<0.04	<0.04	<0.04	<0.04

## 2020 Algal Toxin Results



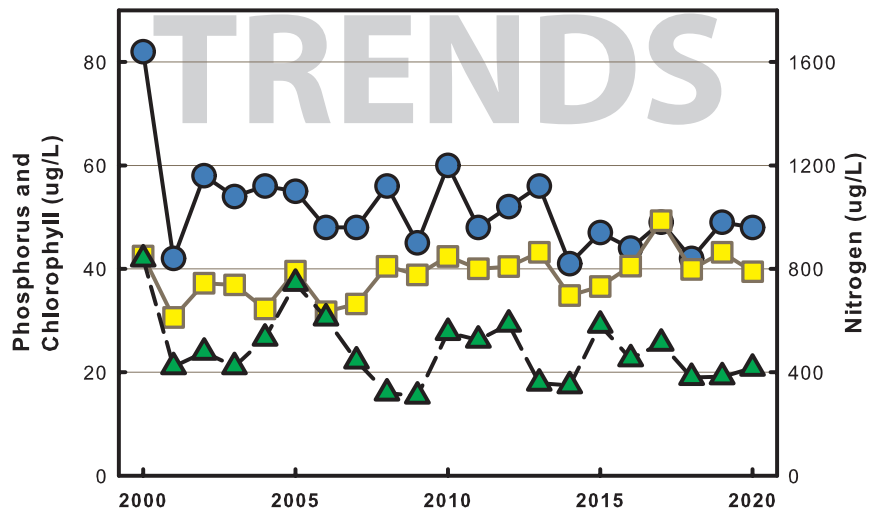
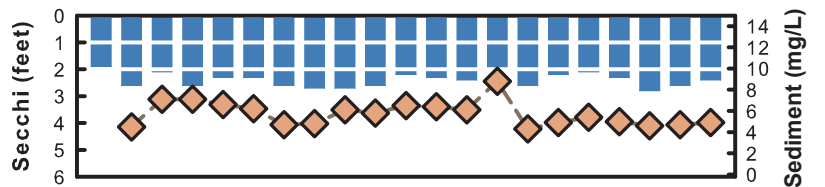
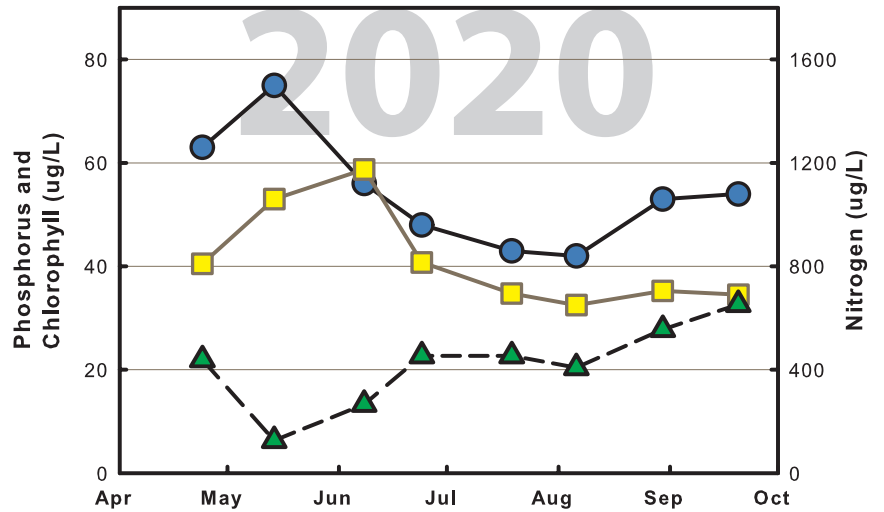
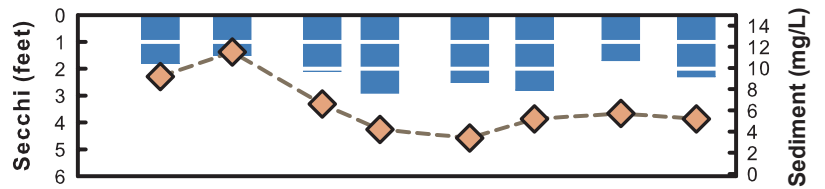
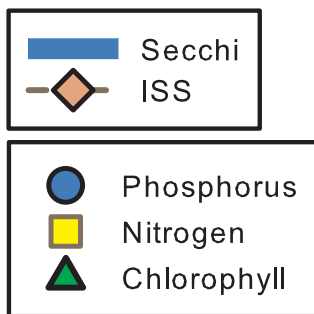
(\* Table shows geometric means)

Above: Algal toxin results

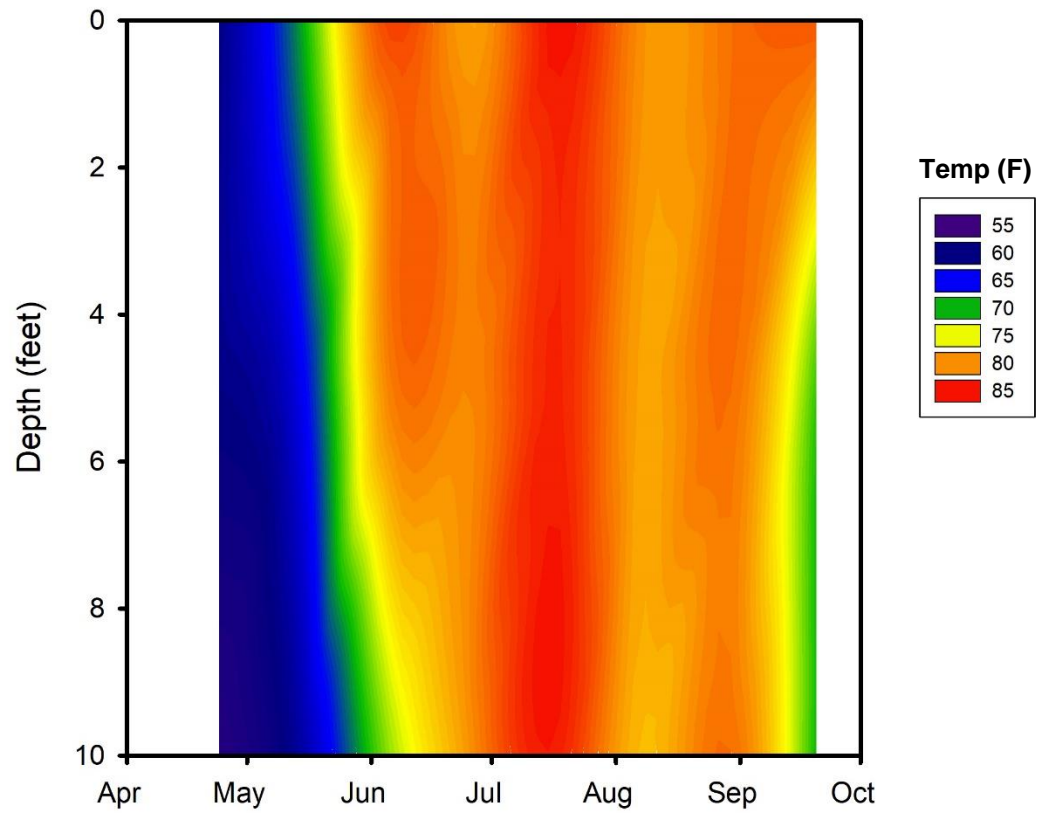
Right top: 2020 data graph

Right bottom: Long-term trend graph.  
(geometric mean data from May 15 - Sept. 15 only)

## Legend for 2020 and Trend graphs



## Sugar Creek 2



To see the surface temperature through the 2020 season, follow the top of the graph from left to right and notice the color changes. You can follow the same procedure for any depth.

Another way to view the graph is pick a date on the bottom axis and look vertically to see where the temperature changes occur.