

# Pomme de Terre Site 1

## 2018 DATA TABLE

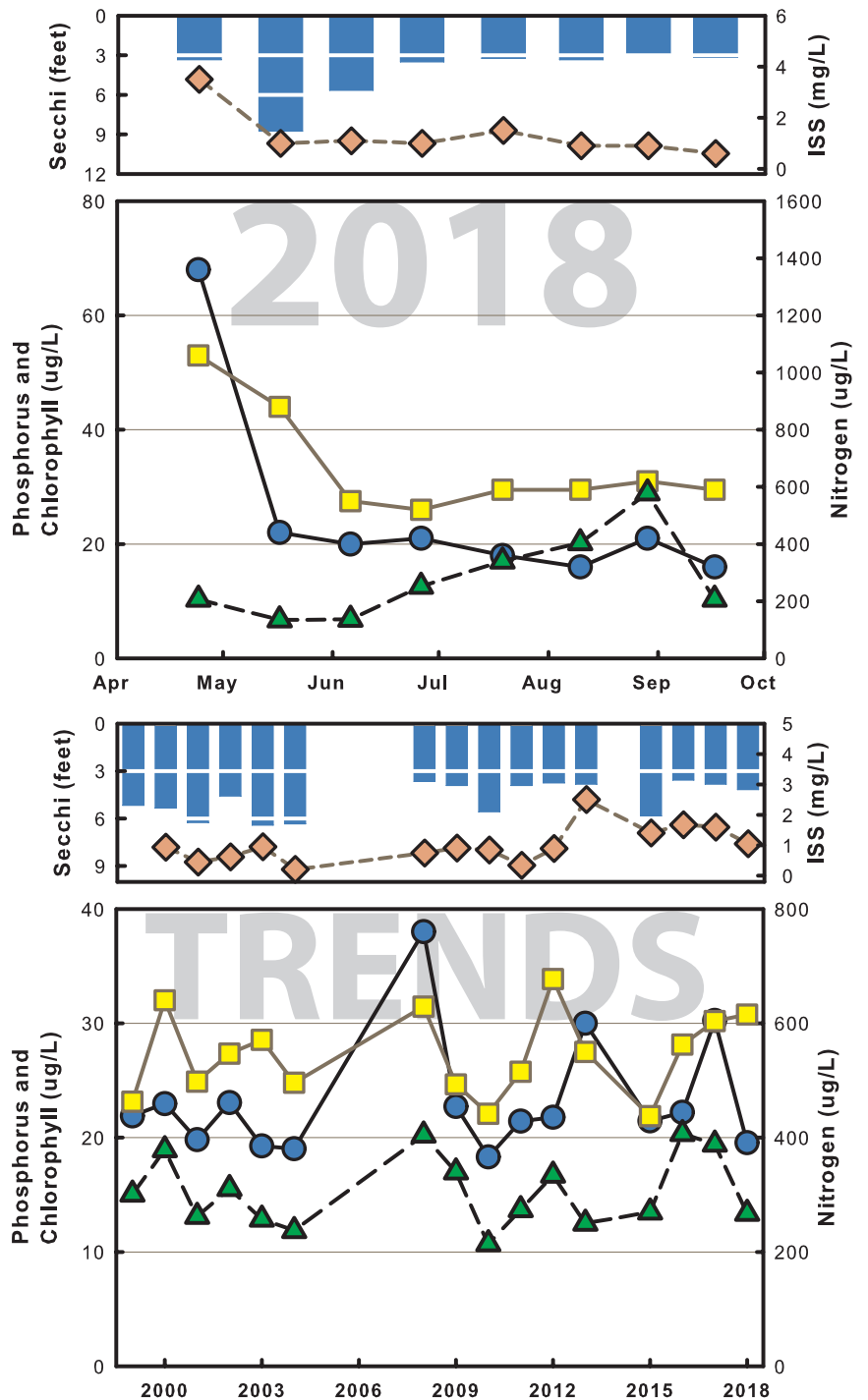
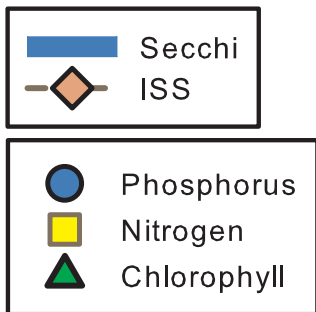
|               | 4/24 | 5/17 | 6/6 | 6/26 | 7/19 | 8/10 | 8/29 | 9/17 | Mean |
|---------------|------|------|-----|------|------|------|------|------|------|
| Temp (F)      | 55   | 75   | 83  | 87   | 85   | 82   | 80   | 82   | 78   |
| Secchi (feet) | 3.3  | 8.7  | 5.7 | 3.5  | 3.2  | 3.3  | 2.9  | 3.2  | 3.9  |
| TP (µg/L)     | 68   | 22   | 20  | 21   | 18   | 16   | 21   | 16   | 22   |
| TN (µg/L)     | 1060 | 880  | 550 | 520  | 590  | 590  | 620  | 590  | 655  |
| CHL (µg/L)    | 10.3 | 6.7  | 6.8 | 12.6 | 17.0 | 20.2 | 28.9 | 10.3 | 12.5 |
| ISS (mg/L)    | 3.5  | 1.0  | 1.1 | 1.0  | 1.5  | 0.9  | 0.9  | 0.6  | 1.1  |

No 2018 Toxin Data

Right top: 2018 data graph

Right bottom: Long-term trend graph.  
(data from May 15 - Sept. 15 only)

Legend for 2018 and Trend graphs



# Pomme de Terre Site 5

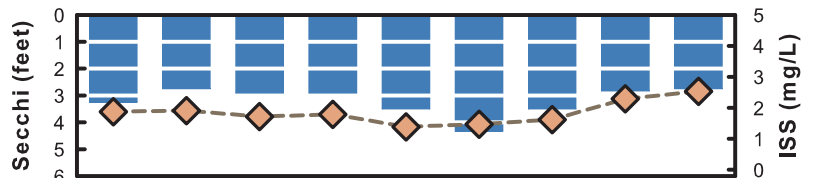
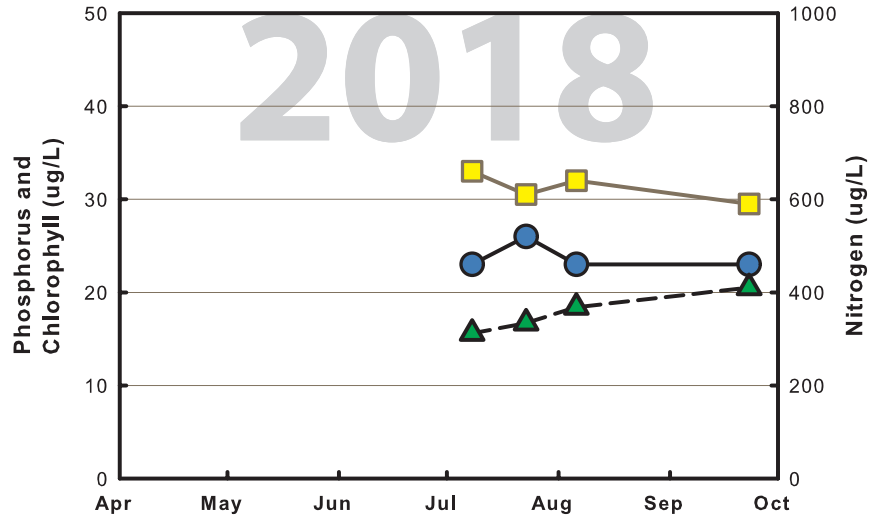
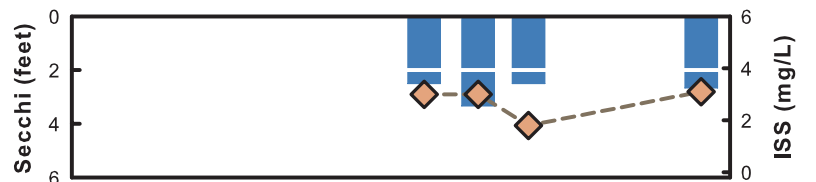
## 2018 DATA TABLE

|                         | 7/8  | 7/23 | 8/6  | 9/23 | Mean |
|-------------------------|------|------|------|------|------|
| Temp (F)                | 87   | 84   | 85   | 78   | 83   |
| Secchi (feet)           | 2.5  | 3.3  | 2.5  | 2.7  | 2.7  |
| TP ( $\mu\text{g/L}$ )  | 23   | 26   | 23   | 23   | 24   |
| TN ( $\mu\text{g/L}$ )  | 660  | 610  | 640  | 590  | 624  |
| CHL ( $\mu\text{g/L}$ ) | 15.6 | 16.7 | 18.4 | 20.5 | 17.7 |
| ISS (mg/L)              | 3.0  | 3.0  | 1.8  | 3.1  | 2.7  |

No 2018 Toxin Data

Right top: 2018 data graph

Right bottom: Long-term trend graph.  
(data from May 15 - Sept. 15 only)



Legend for 2018 and Trend graphs

