

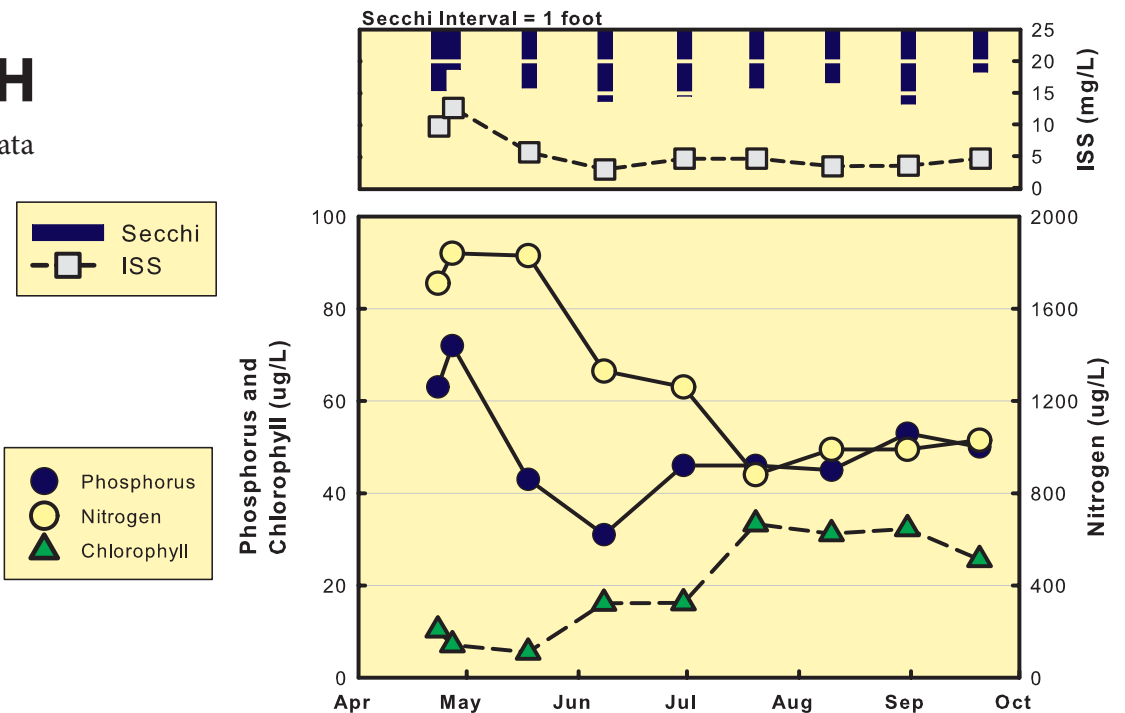
# Smithville Site 4

## 2017 DATA TABLE

	4/23	4/27	5/18	6/8	6/30	7/20	8/10	8/31	9/20	Mean
Temp (F)	65	62	69	80	78	86	81	78	78	75
Secchi (inches)	23	15	22	27	25	22	20	28	16	22
TP ( $\mu\text{g/L}$ )	63	72	43	31	46	46	45	53	50	47
TN ( $\mu\text{g/L}$ )	1710	1840	1830	1330	1260	880	990	990	1030	1270
CHL ( $\mu\text{g/L}$ )	10.3	7.1	5.5	16.1	16.2	33.3	31.2	32.3	25.6	16.5
ISS (mg/L)	9.7	12.6	5.6	2.9	4.6	4.6	3.4	3.5	4.6	5.1

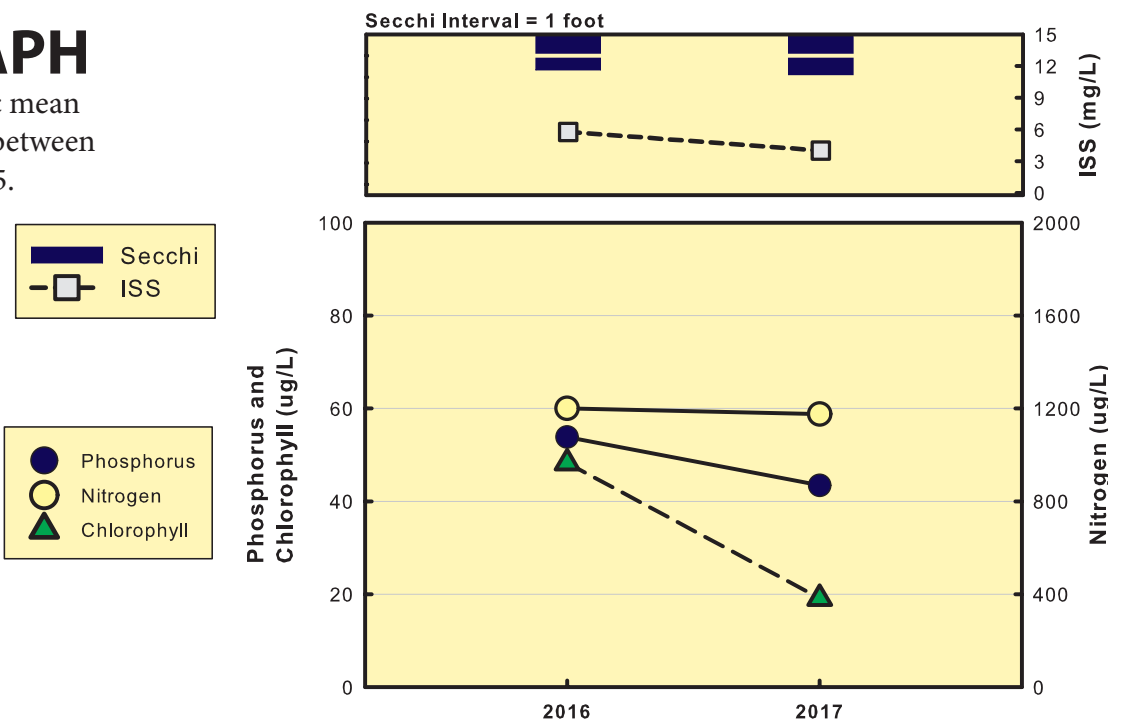
## 2017 GRAPH

Graph displays all 2017 data



## TREND GRAPH

Graph displays geometric mean values for data collected between May 15 and September 15.



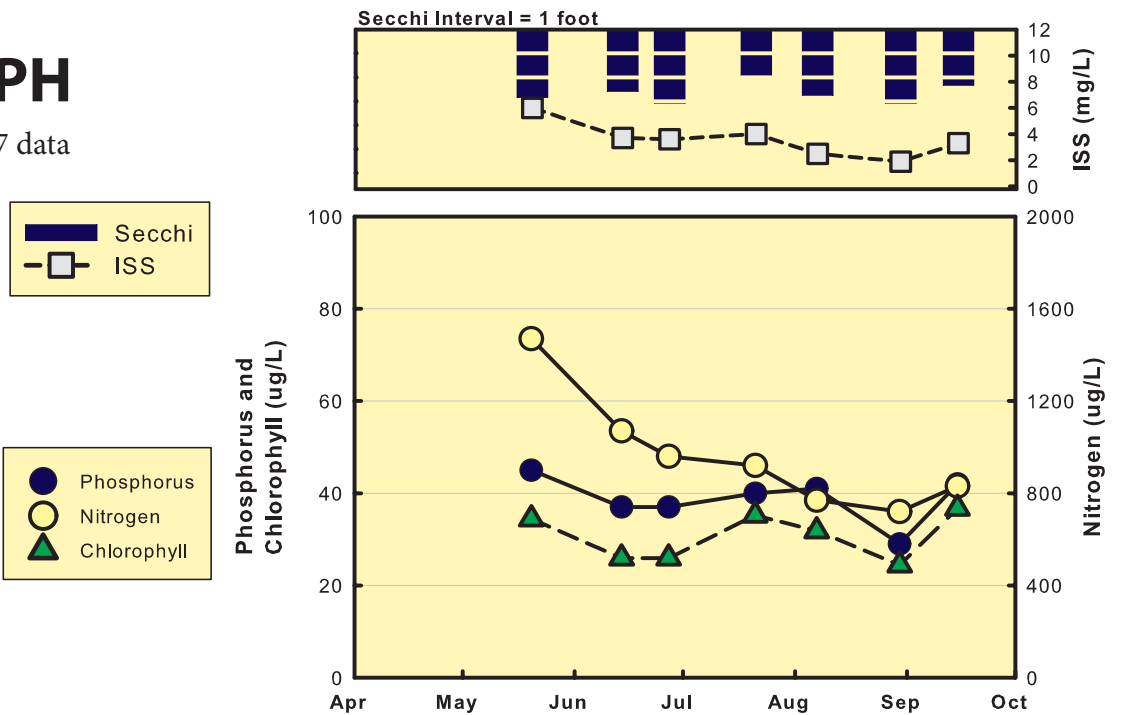
# Smithville Site 5

## 2017 DATA TABLE

	5/20	6/14	6/27	7/21	8/7	8/30	9/15	Mean
Temp (F)	66	78	76	87	78	76	76	77
Secchi (inches)	34	31	37	23	33	37	28	31
TP (µg/L)	45	37	37	40	41	29	42	38
TN (µg/L)	1470	1070	960	920	770	720	830	938
CHL (µg/L)	34.4	25.9	25.9	35.2	31.8	24.4	36.7	30.2
ISS (mg/L)	6.0	3.7	3.6	4.0	2.5	1.9	3.3	3.4

## 2017 GRAPH

Graph displays all 2017 data



## TREND GRAPH

Graph displays geometric mean values for data collected between May 15 and September 15.

New monitoring site in 2017,  
No trend data available